

REQUIRE THIS PLAN TO BE DEPOSITED UNDER THE LAND TITLES ACT.		PLAN 33R-19990		
DATE DECEMBER 5, 2017		RECEIVED AND DEPOSITED DATE DEC 18 2017		
SIGNED: <i>Blake van der Veem</i> BLAKE van der VEEN, O.L.S.		L. VAN BOMMEL REPRESENTATIVE FOR THE LAND REGISTRAR FOR THE LAND TITLES DIVISION OF MIDDLESEX (N33)		
PART	LOT	CON	P.I.N.	AREA
1	Part of 7	Broken Front Concession "B"	Part of 08198 - 0134	0.181 ha.
2			Part of 08198 - 0134	0.070 ha.

PARTS 1 & 2 COMPRISE PART OF P.I.N. 08198 - 0134

PLAN OF SURVEY  
of part of  
**LOT 7  
BROKEN FRONT CONCESSION "B"**  
(GEOGRAPHIC TOWNSHIP OF WESTMINSTER)  
in the  
**CITY OF LONDON**  
COUNTY OF MIDDLESEX  
Scale 1 : 500  
MTE OLS LTD.

METRIC: DISTANCES AND COORDINATES SHOWN ON THIS PLAN ARE IN METRES AND CAN BE CONVERTED TO FEET BY DIVIDING BY 0.3048  
AREAS SHOWN ON THIS PLAN ARE IN HECTARES AND CAN BE CONVERTED TO ACRES BY MULTIPLYING BY 2.47

- NOTES**
- SIB DENOTES STANDARD IRON BAR.
  - IB# IRON BAR.
  - IB# ROUND IRON BAR.
  - CC CUT CROSS.
  - WT WITNESS.
  - (SU) SOURCE UNKNOWN.
  - (HR) HOLSTEAD & REDMOND LIMITED, O.L.S.'s.
  - MONUMENT FOUND.
  - MONUMENT SET.
  - BC BEGINNING OF CURVE.
  - EC END OF CURVE.
  - SSIB SHORT STANDARD IRON BAR.
  - NT NOT TANGENTIAL.
  - P.I. POINT OF INTERSECTION.
  - PRC POINT OF REVERSE CURVE.
  - P PLAN 33R-19361.

BEARINGS AND DISTANCES SHOWN ON THIS PLAN AGREE WITH THOSE SHOWN ON PLAN 33R-19950  
FOUND MONUMENTS ARE (HR) UNLESS NOTED OTHERWISE

BEARINGS ARE UTM GROUND IN NAD83 (2010.0) DERIVED FROM G.P.S. OBSERVATIONS AND THE CAN-NET BASE STATION NETWORK AND ARE REFERRED TO THE CENTRAL MERIDIAN 81°00' WEST LONGITUDE, ZONE 17

OBSERVED REFERENCE POINTS (ORP)

UTM ZONE 17, NAD83 (2010.0) GRID COORDINATES TO URBAN ACCURACY PER SEC. 14 (2) OF O.REG. 216/10

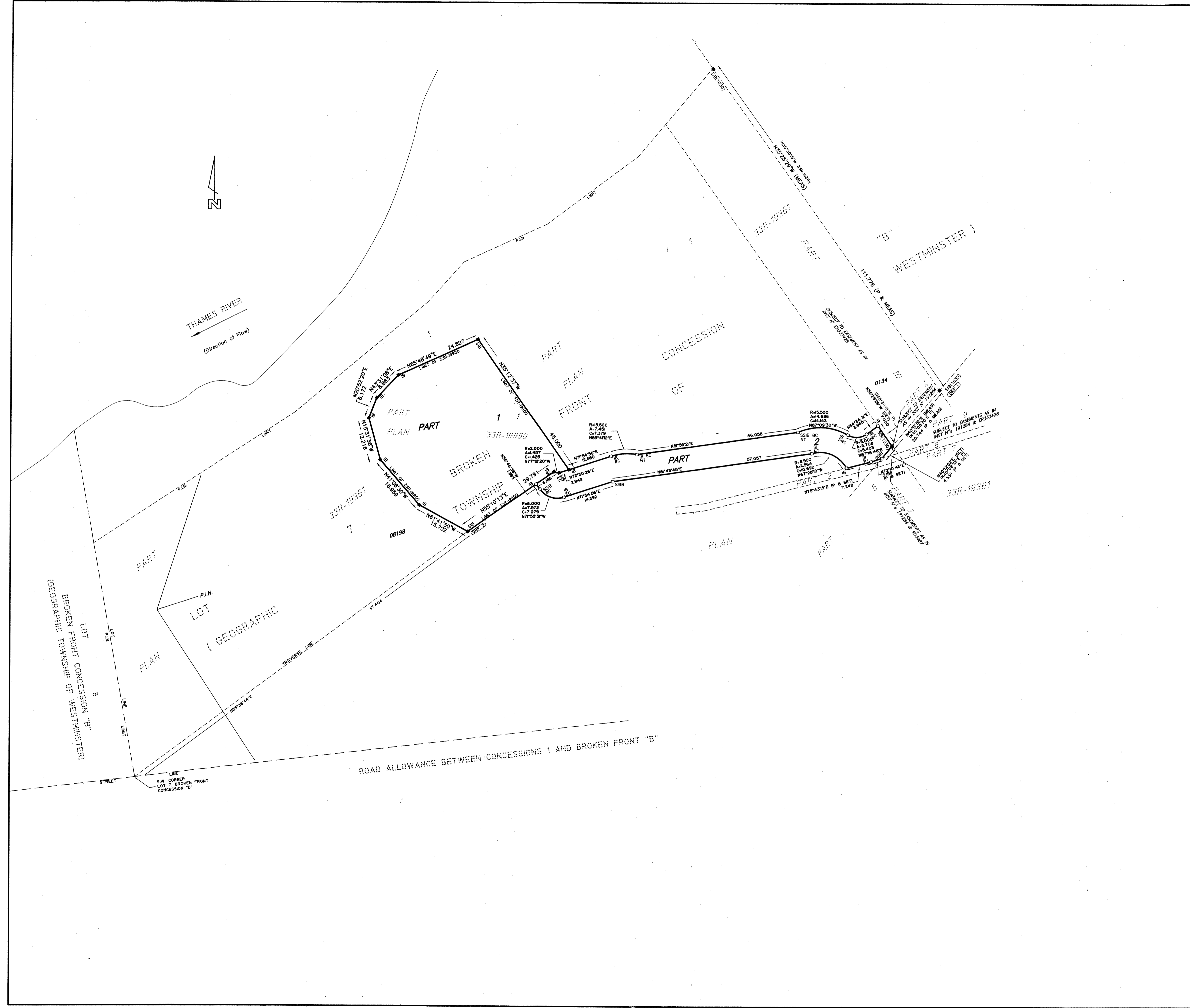
POINT ID	NORTHING	EASTING
ORP 1	4757483.996	488339.040
ORP 2	4757443.514	488205.248

COORDINATES CANNOT, IN THEMSELVES, BE USED TO RE-ESTABLISH CORNERS OR BOUNDARIES SHOWN ON THIS PLAN.  
DISTANCES SHOWN ON THIS PLAN ARE GROUND LEVEL DISTANCES AND CAN BE CONVERTED TO GRID DISTANCES BY MULTIPLYING BY A COMBINED SCALE FACTOR OF 0.999569425

**SURVEYOR'S CERTIFICATE**  
I CERTIFY THAT:  
(1) THIS SURVEY AND PLAN ARE CORRECT AND IN ACCORDANCE WITH THE SURVEYS ACT, THE SURVEYORS ACT AND THE LAND TITLES ACT AND THE REGULATIONS MADE UNDER THEM.  
(2) THE SURVEY WAS COMPLETED ON THE 24th DAY OF NOVEMBER, 2017

DECEMBER 5, 2017  
LONDON, ONTARIO.

*Blake van der Veem*  
BLAKE van der VEEN  
ONTARIO LAND SURVEYOR



**MTE OLS Ltd.**  
ONTARIO LAND SURVEYORS  
649 COLBORNE STREET  
LONDON, ONTARIO, N6A 3Z2  
TEL: (519) 672-4551 FAX: (519) 672-4587

COG File:	COGO:
Surveyed By: PJ	MTE File No:
Checked By: BV	HR File No:
Drawn By: FS	Date: 17/12/05
	File No: 89-0313E